

How To Use Remote Desktop Connection (PC)

By: Justine Cucchi



WAYNE STATE

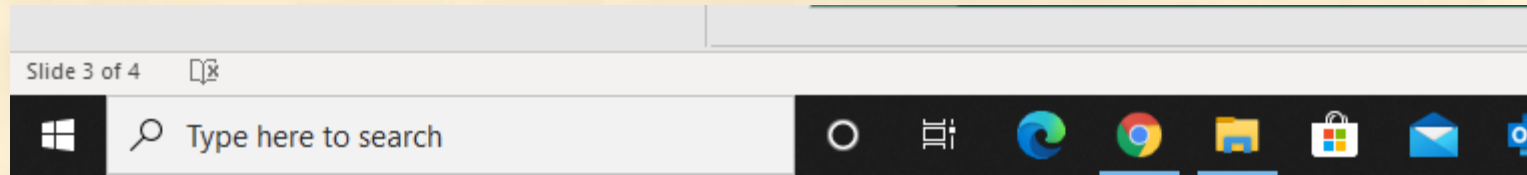
School of Information Sciences

Step 1: Make sure you are connected to the VPN

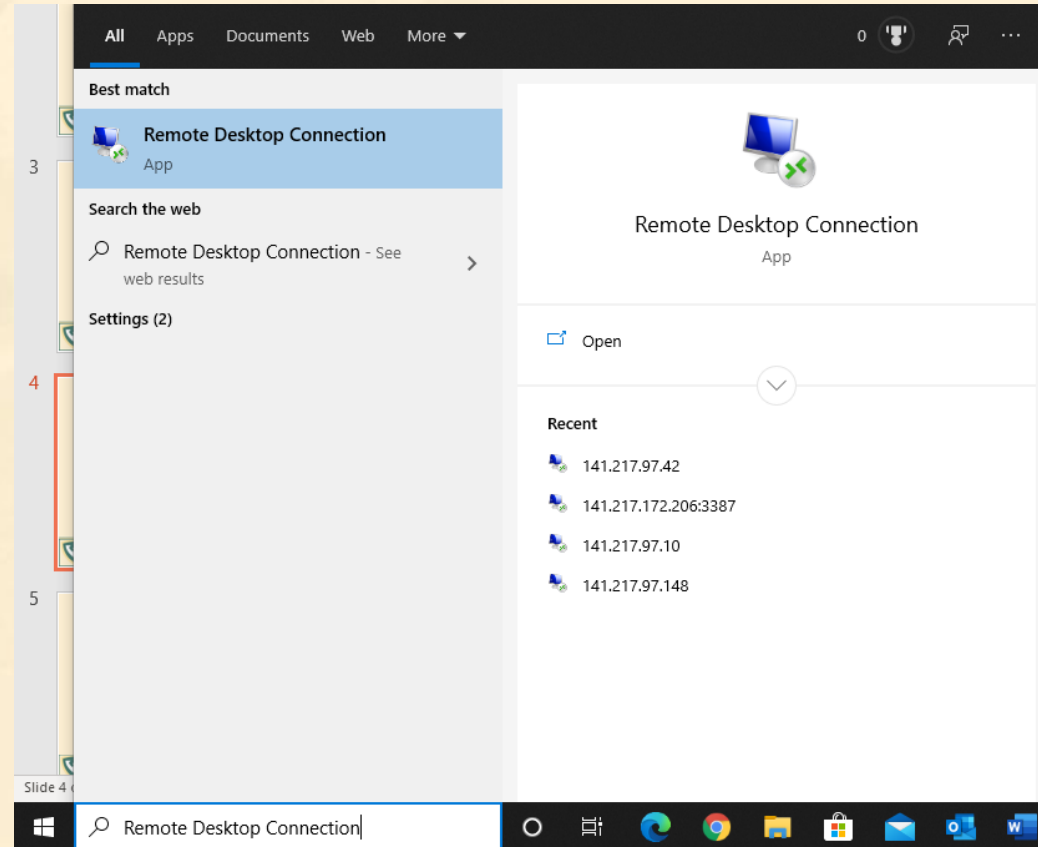
- Currently, WSU is using the software GlobalProtect
- You can access tutorials for connecting here:
<https://tech.wayne.edu/kb/security/wsu-virtual-private-network/500212>
- Here too: <https://tech.wayne.edu/kb/security/two-factor-authentication>



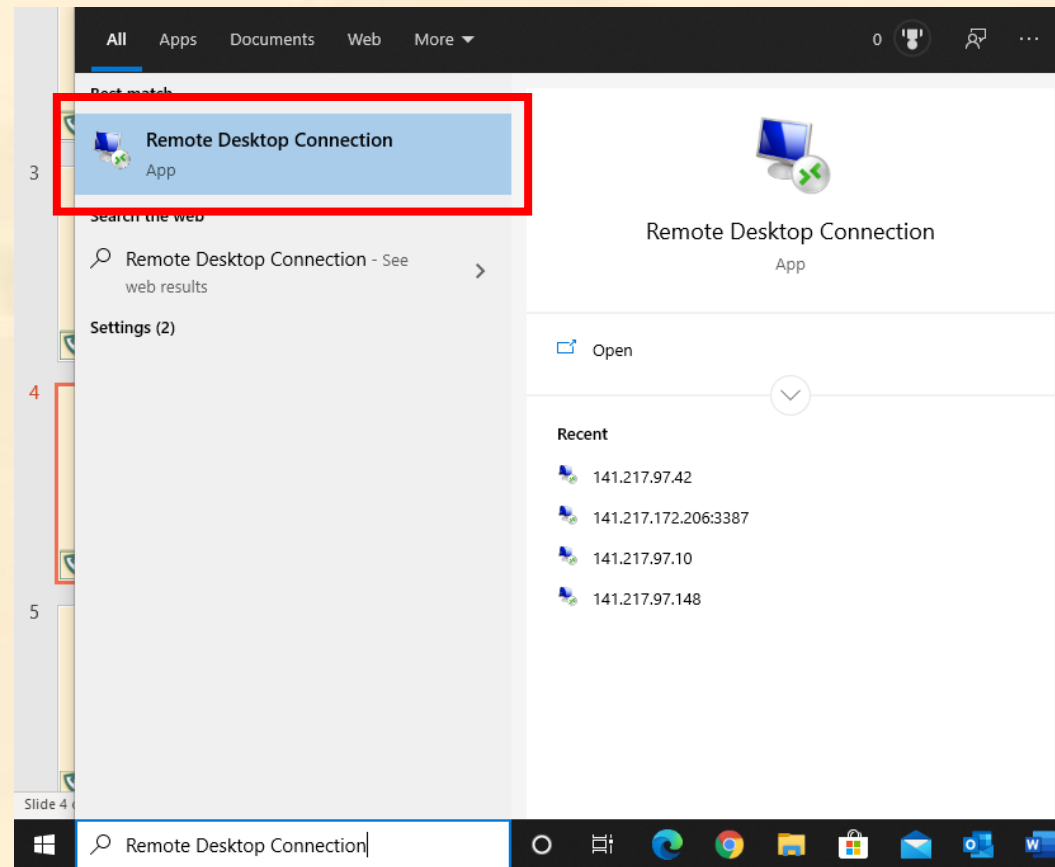
Step 2: Navigate to the bottom corner of your PC



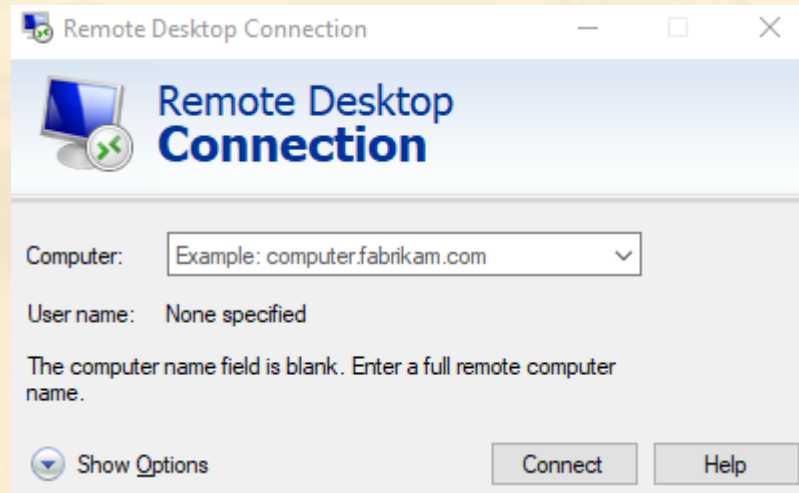
Step 3: Type in Remote Desktop Connection



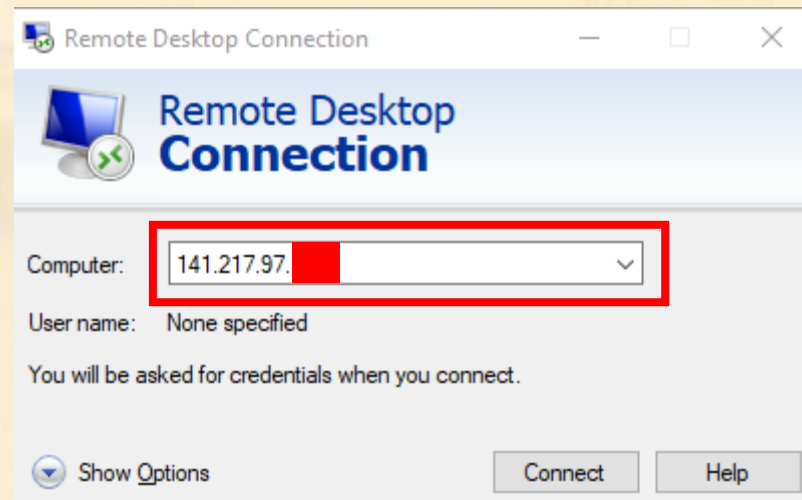
Step 4: Click on the program Remote Desktop Connection



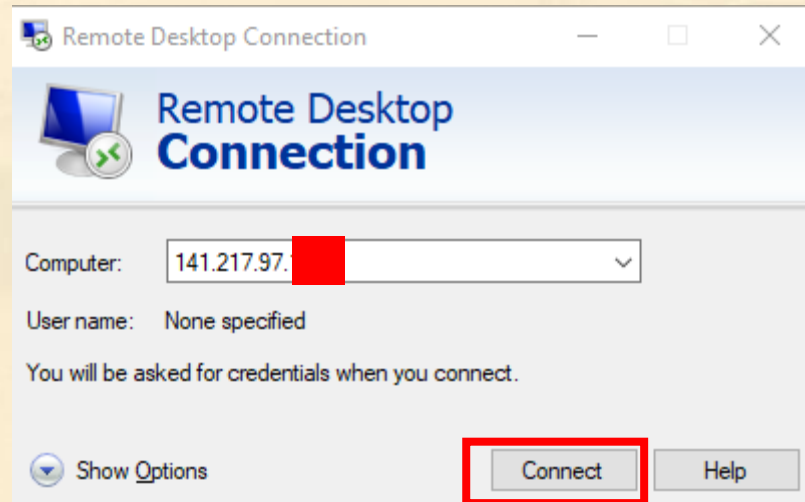
Once it is open, you will see the following box



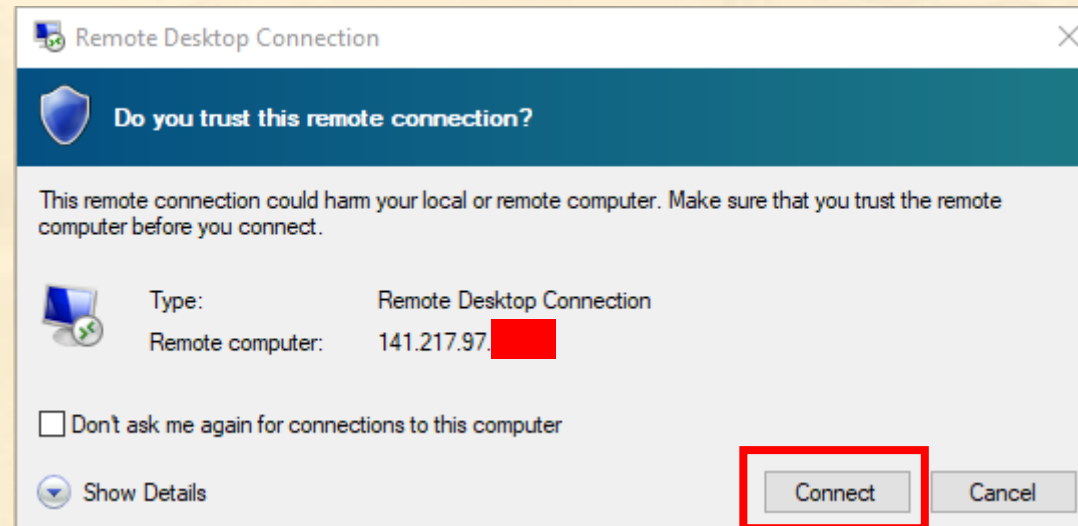
Step 5: Type in the IP address of the computer you wish to connect to



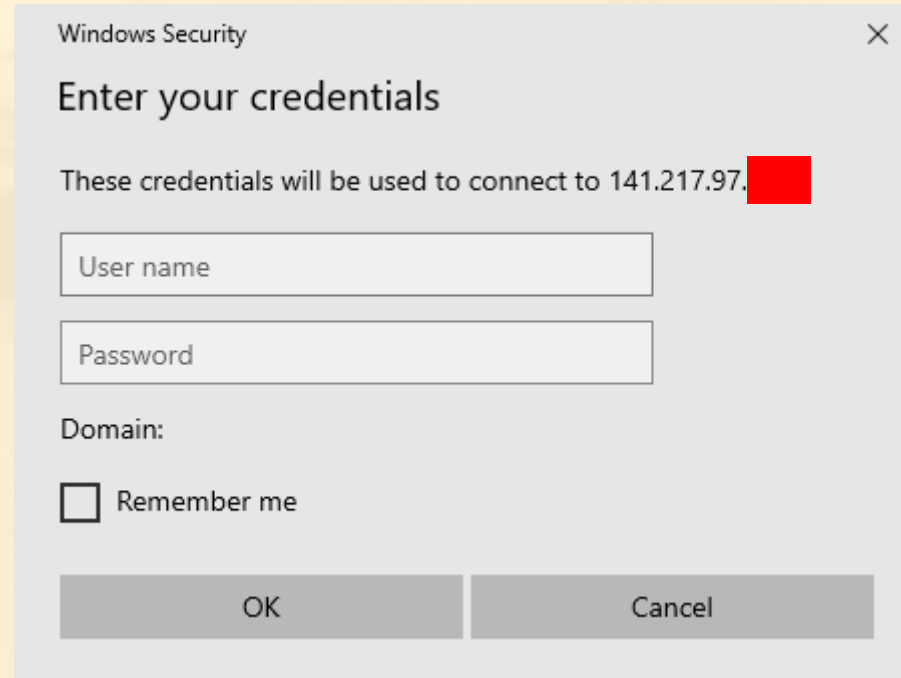
Step 6: Click Connect



Step 7: If this box comes up, click Connect



After either Step 6 or 7, you will see the following box



Windows Security

Enter your credentials

These credentials will be used to connect to 141.217.97. [redacted]

User name

Password

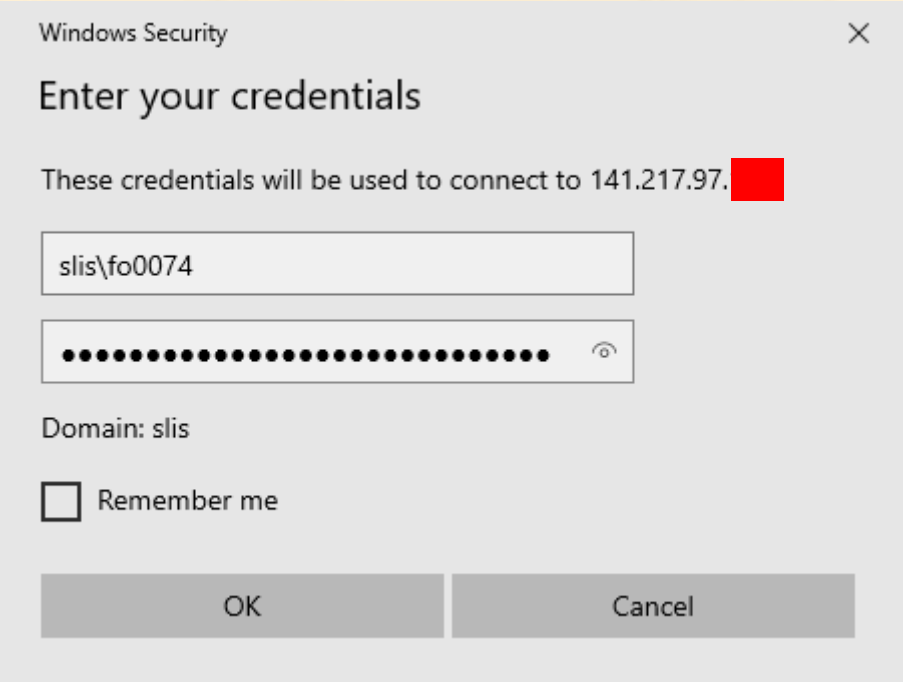
Domain:

Remember me

OK Cancel



Step 9: Enter your SIS Domain credentials (if you would like the computer to not ask for them again, check the Remember Me box)



Windows Security

Enter your credentials

These credentials will be used to connect to 141.217.97. [redacted]

slis\fo0074

..... [eye icon]

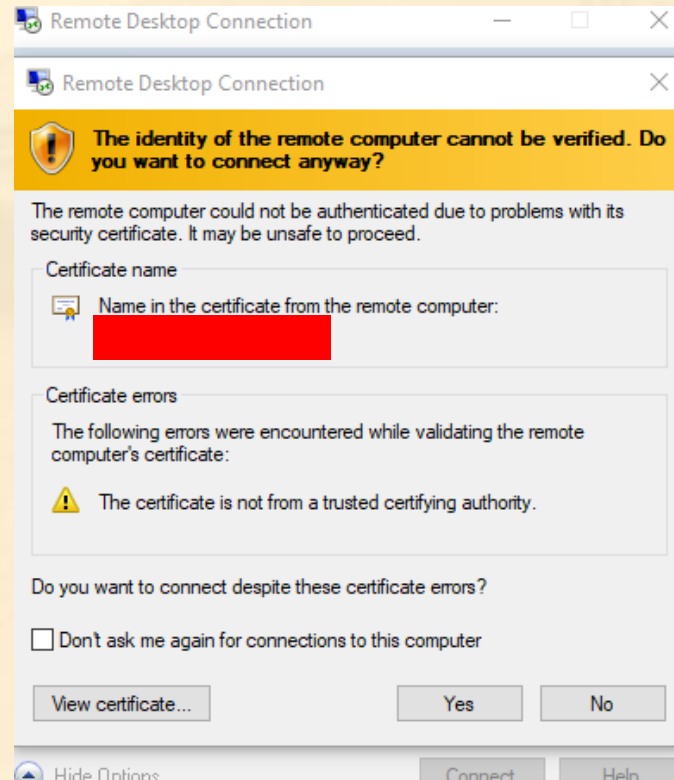
Domain: slis

Remember me

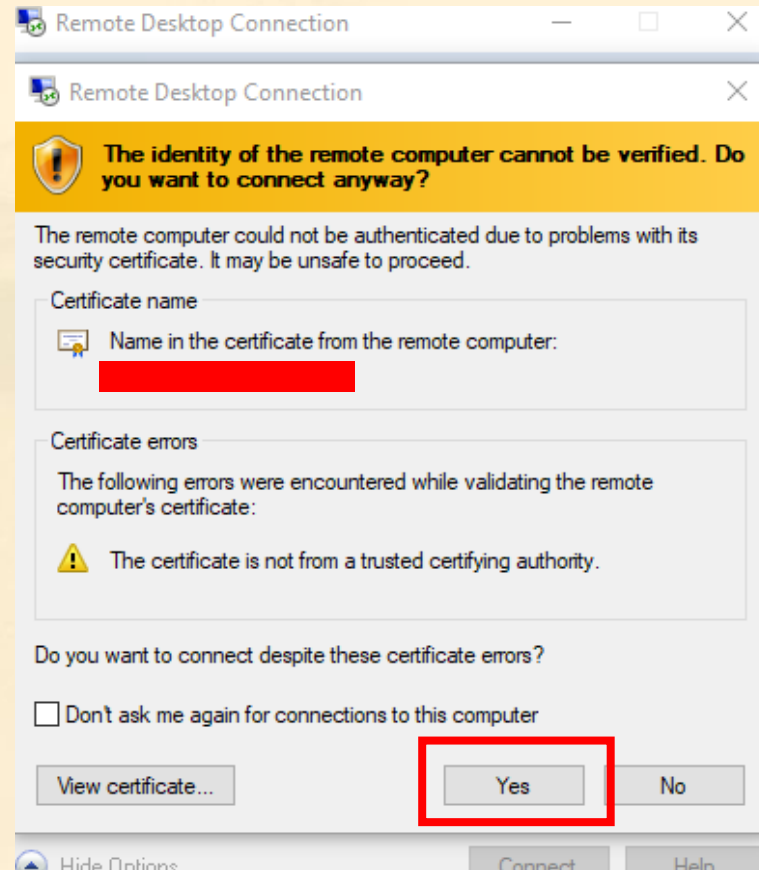
OK Cancel



If the connection is successful, you will see the following box



Step 10: Click on Yes



If you see the home screen of the computer you are logging into, then your connection was successful.

