

Accessing the Apache Server Using PuTTY

Tutorial Created By: Justine Cucchi and Katie Tapia-Lynch



WAYNE STATE

School of Information Sciences

1. Download PuTTY from <https://www.chiark.greenend.org.uk/~sgtatham/putty/latest.html>.

Note: Putty can only be used with Windows or Unix

Download PuTTY: latest release (0.71)

[Home](#) | [FAQ](#) | [Feedback](#) | [Licence](#) | [Updates](#) | [Mirrors](#) | [Keys](#) | [Links](#) | [Team](#)
Download: [Stable](#) | [Snapshot](#) | [Docs](#) | [Changes](#) | [Wishlist](#)

This page contains download links for the latest released version of PuTTY. Currently this is 0.71, released on 2019-03-16.

When new releases come out, this page will update to contain the latest, so this is a good page to bookmark or link to. Alternatively, here is a [permanent link to the 0.71 release](#).

Release versions of PuTTY are versions we think are reasonably likely to work well. However, they are often not the most up-to-date version of the code available. If you have a problem with this release, then it might be worth trying out the [development snapshots](#), to see if the problem has already been fixed in those versions.

Package files

You probably want one of these. They include versions of all the PuTTY utilities.

(Not sure whether you want the 32-bit or the 64-bit version? Read the [FAQ entry](#).)

MSI ('Windows Installer')

32-bit:	putty-0.71-installer.msi	(or by FTP)	(signature)
64-bit:	putty-64bit-0.71-installer.msi	(or by FTP)	(signature)

Unix source archive

.tar.gz:	putty-0.71.tar.gz	(or by FTP)	(signature)
----------	-----------------------------------	-----------------------------	-----------------------------

Alternative binary files

The installer packages above will provide versions of all of these (except PuTTYtel), but you can download standalone binaries one by one if you prefer.

(Not sure whether you want the 32-bit or the 64-bit version? Read the [FAQ entry](#).)

putty.exe (the SSH and Telnet client itself)

32-bit:	putty.exe	(or by FTP)	(signature)
64-bit:	putty.exe	(or by FTP)	(signature)

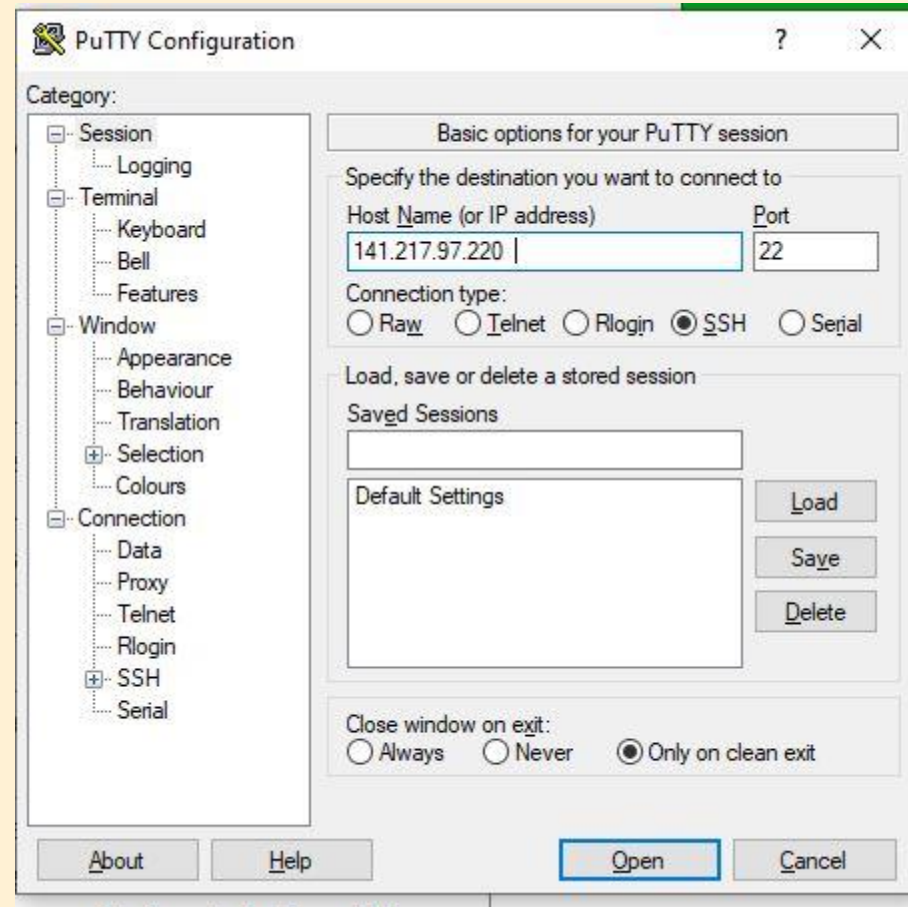
pscp.exe (an SCP client, i.e. command-line secure file copy)

32-bit:	pscp.exe	(or by FTP)	(signature)
64-bit:	pscp.exe	(or by FTP)	(signature)

psftp.exe (an SFTP client, i.e. general file transfer sessions much like FTP)



2. Once PuTTY is downloaded, open the program and configure the settings like below. Click “Open” when finished.



3. A window will open with a command prompt. Enter your Wayne Access ID and press “Enter” on your keyboard.



4. The server will then prompt you to enter your password given to you in your Wayne email. Type it in and press “Enter” on your keyboard.
Note: The password will not show up as you are typing for security purposes.

```
fo0074@SISSStudentSrv: ~  
login as: fo0074  
fo0074@141.217.97.220's password:  
Welcome to Ubuntu 16.04.6 LTS (GNU/Linux 4.4.0-151-generic x86_64)  
  
* Documentation:  https://help.ubuntu.com  
* Management:    https://landscape.canonical.com  
* Support:       https://ubuntu.com/advantage  
  
1 package can be updated.  
0 updates are security updates.  
  
Last login: Wed Jul 17 13:35:34 2019 from 141.217.97.49  
fo0074@SISSStudentSrv:~$
```

