

Logging Into FileZilla

By: Justine Cucchi



WAYNE STATE

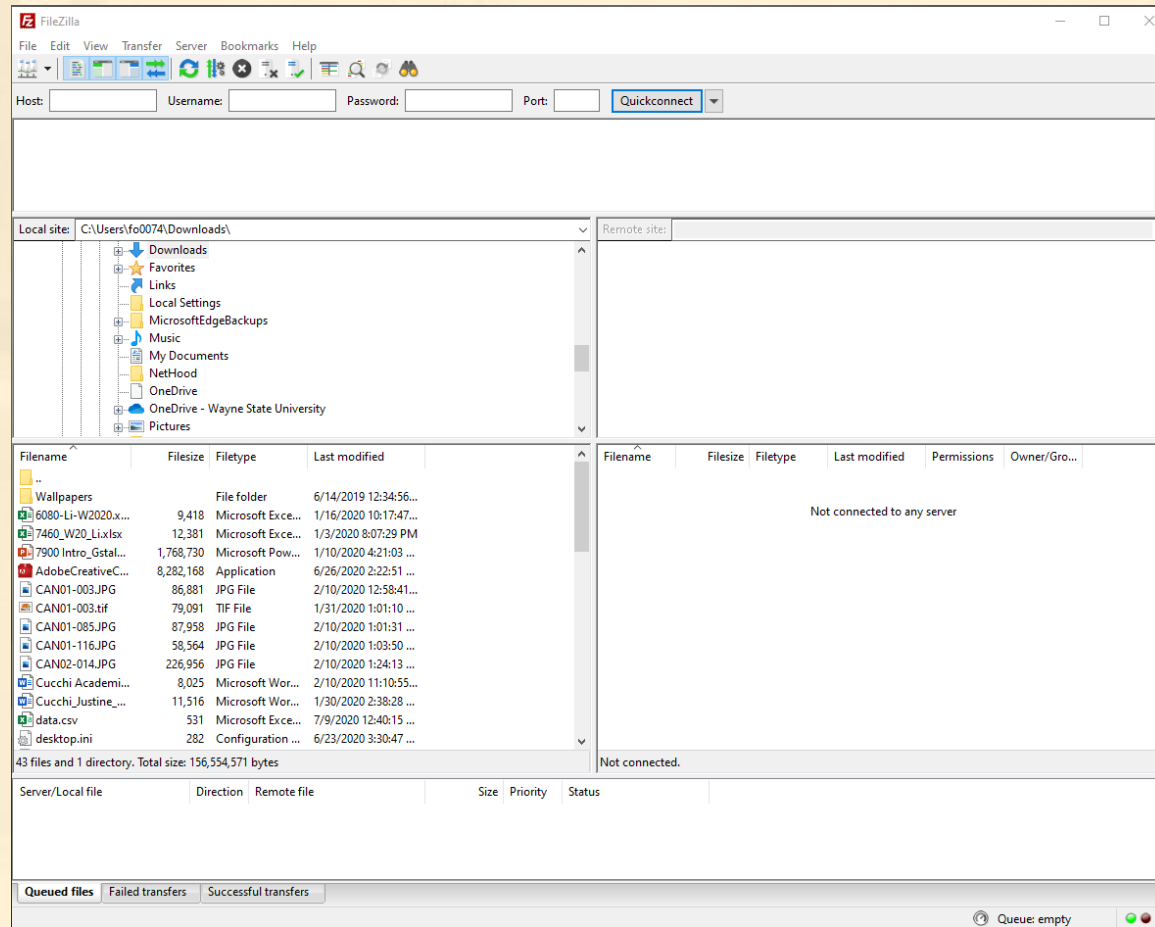
School of Information Sciences

Step 1: Make sure you are logged into the WSU VPN

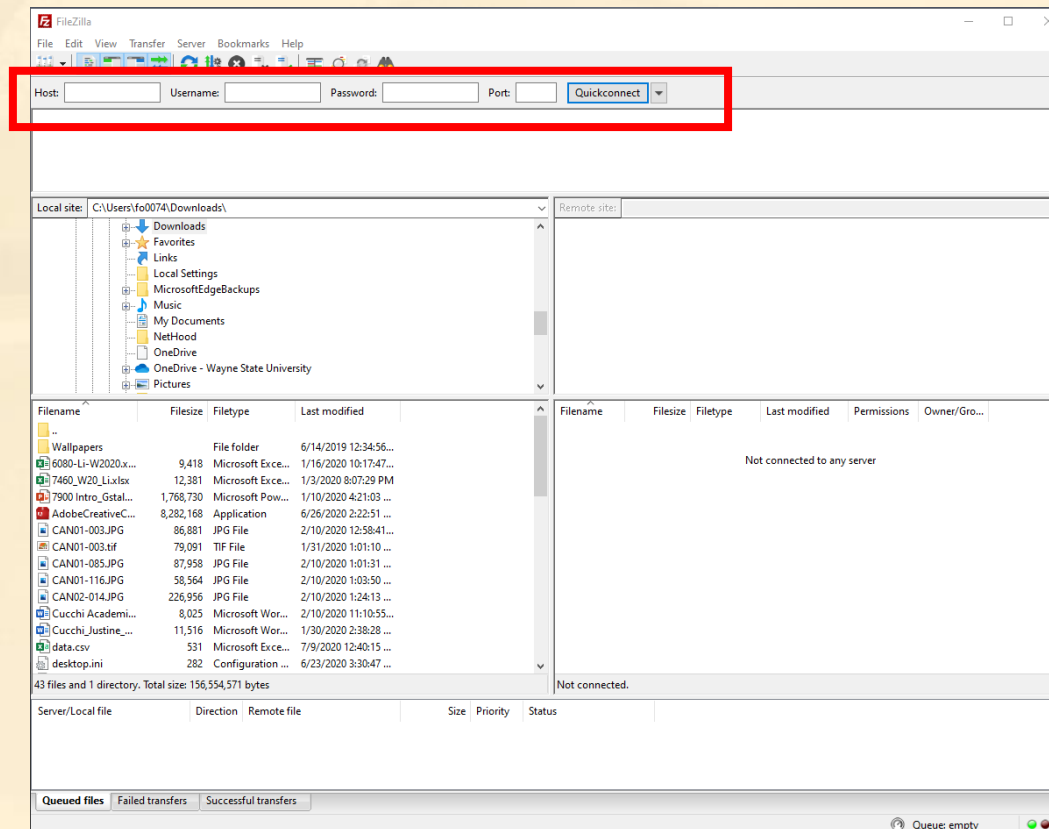
- Currently, WSU is using the software GlobalProtect.
- Instructions on how to do so can be found here:
<https://tech.wayne.edu/kb/security/wsu-virtual-private-network/500212>
- Here too: <https://tech.wayne.edu/kb/security/two-factor-authentication>
- If your Mac is experiencing issues connecting to the VPN, try the directions on this webpage: <https://tech.wayne.edu/kb/security/wsu-virtual-private-network/500214>



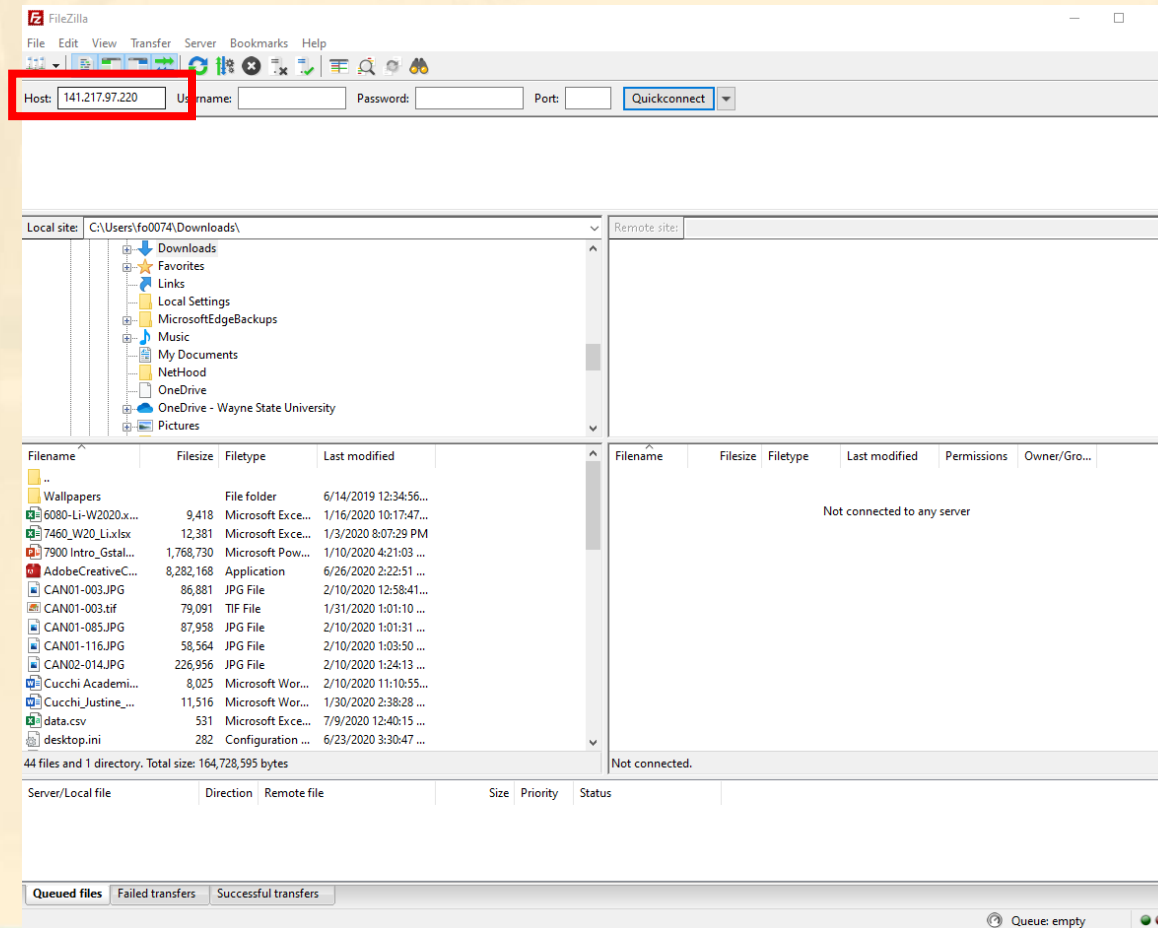
Step 2: Open FileZilla



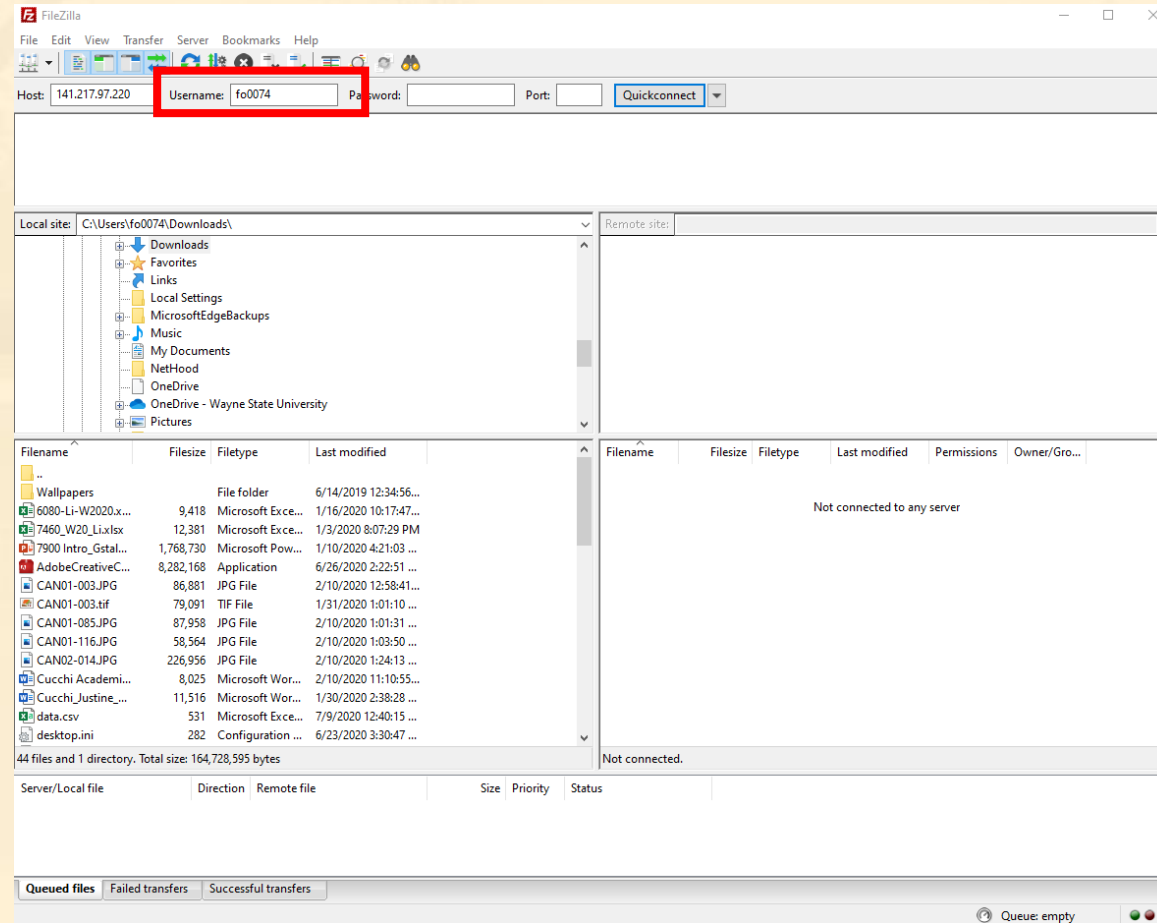
Step 3: Navigate to the top bar. You will be inputting information here.



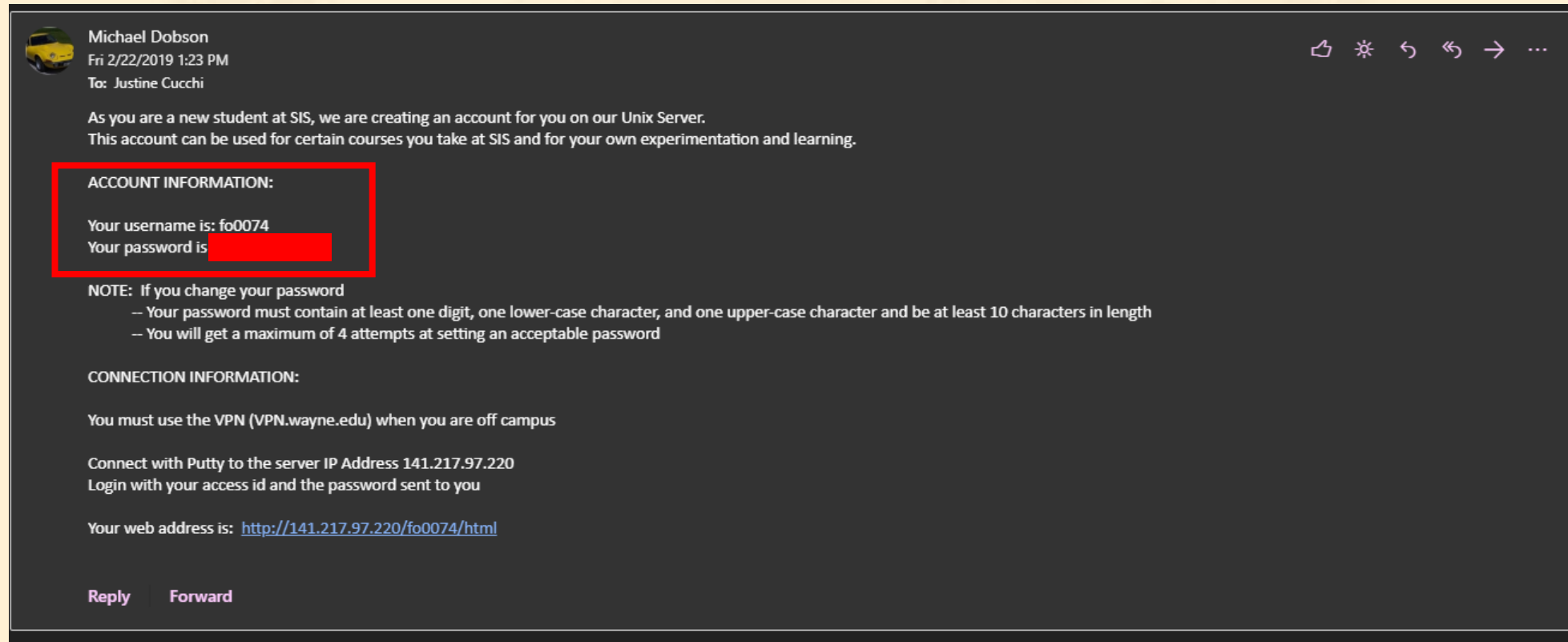
Step 4: Enter 141.217.97.220 in the Host field



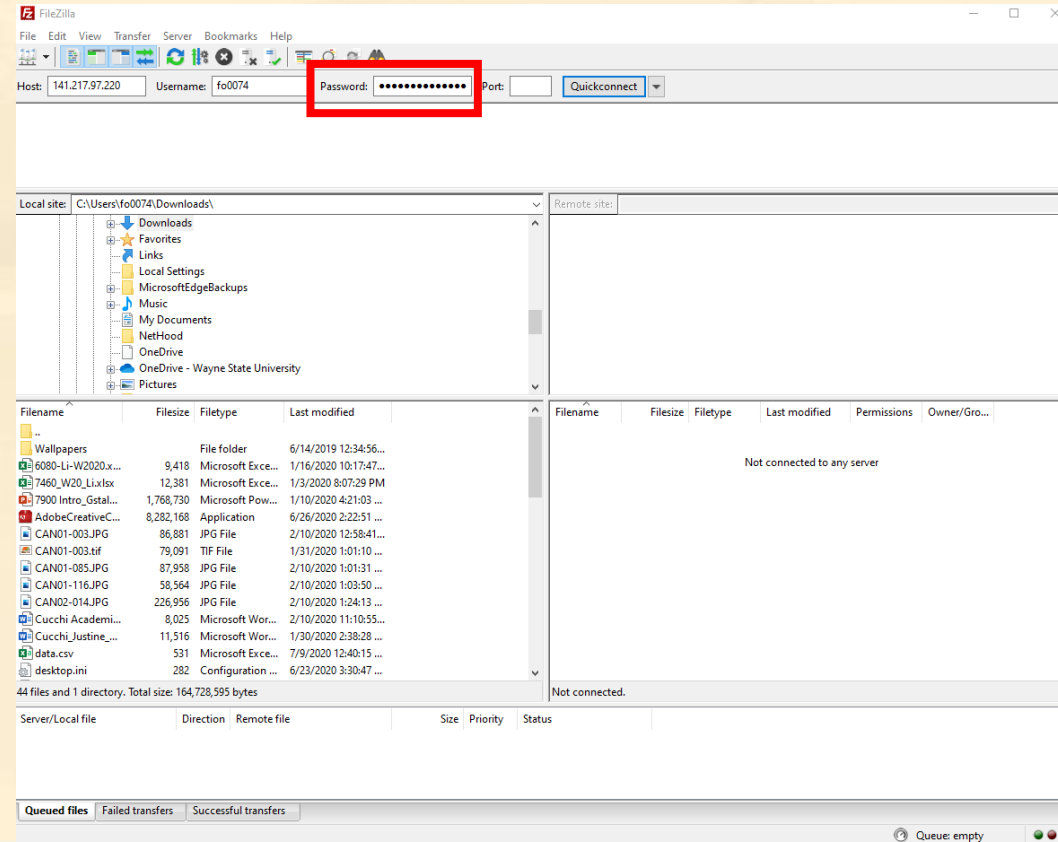
Step 5: Enter your own WSU Access ID in the Username field



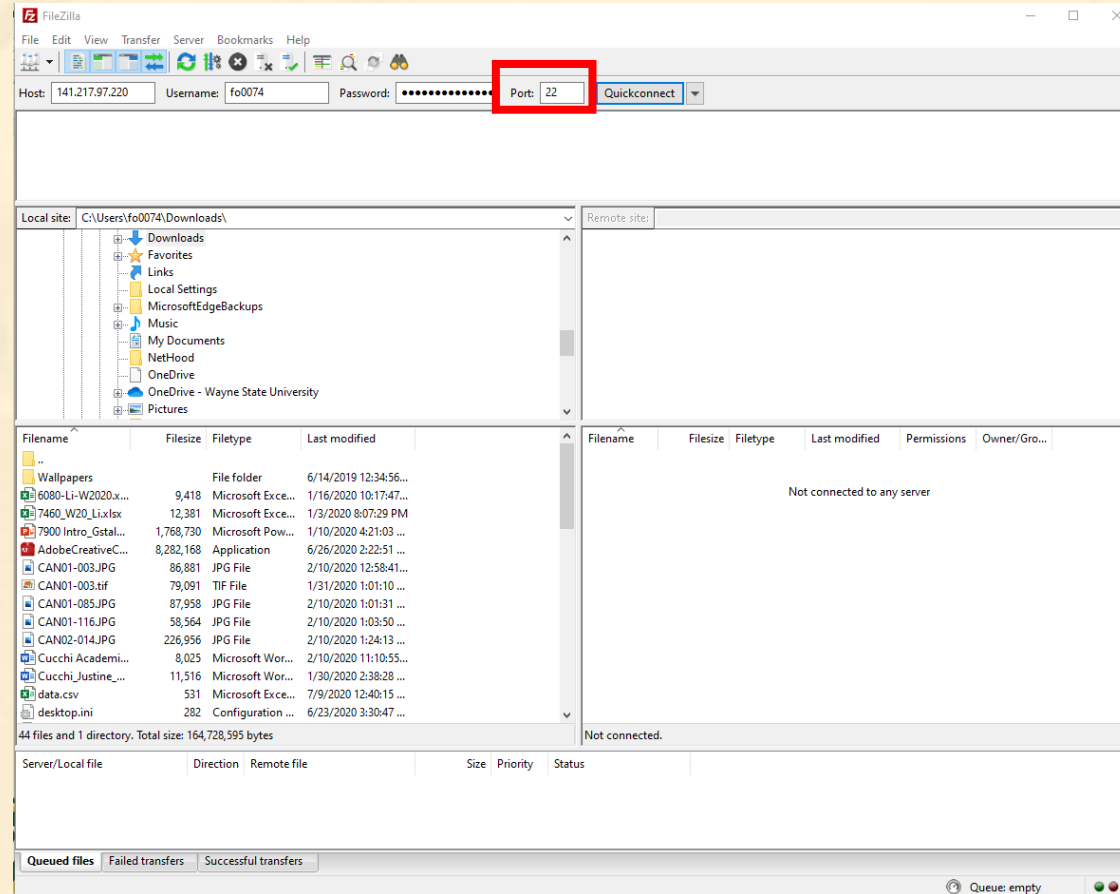
Step 6: Navigate to your WSU email to get your Apache server password. The email will look like this.



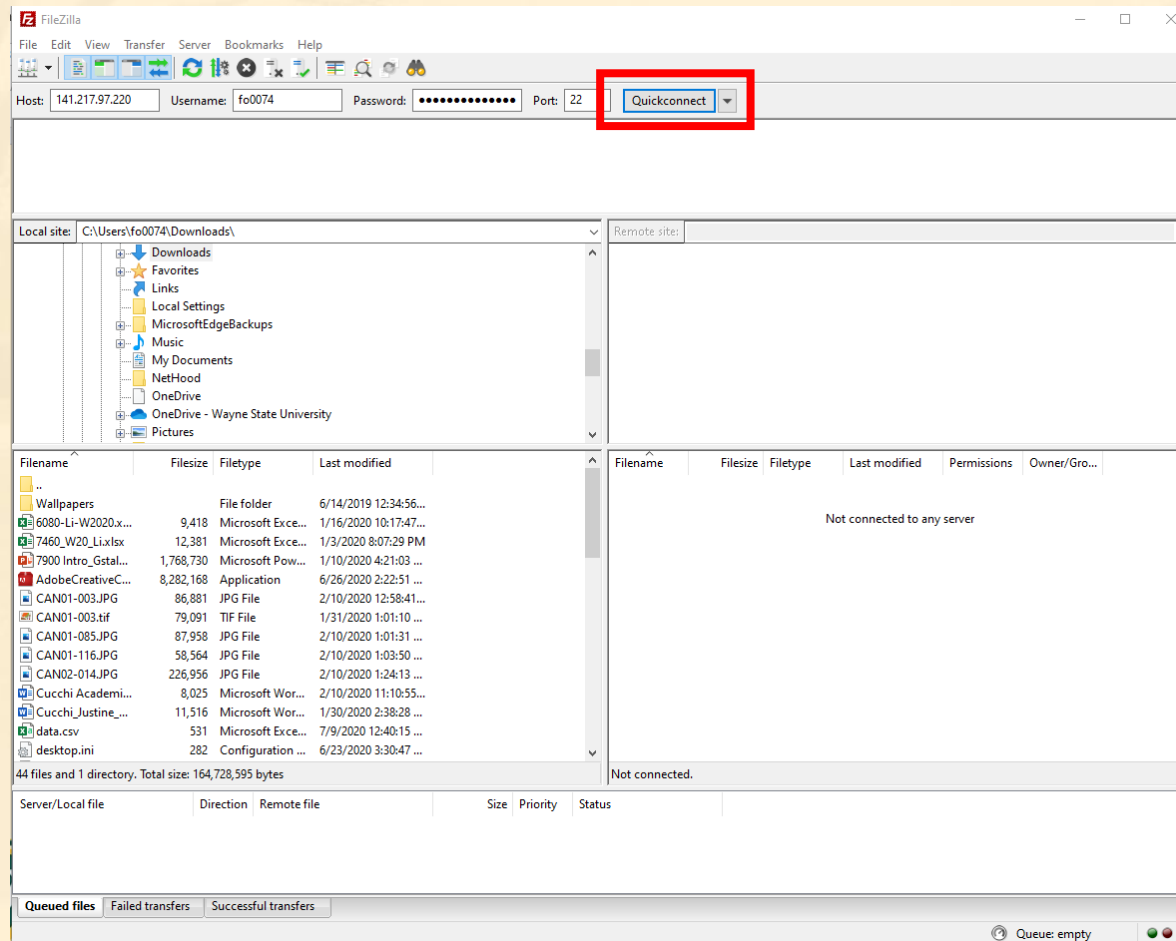
Step 7: Enter your Apache Server password from the email in the Password field



Step 8: Enter 22 in the Port field



Step 9: Click on Quickconnect



You will know you are connected if you see the indicated items on your screen.

