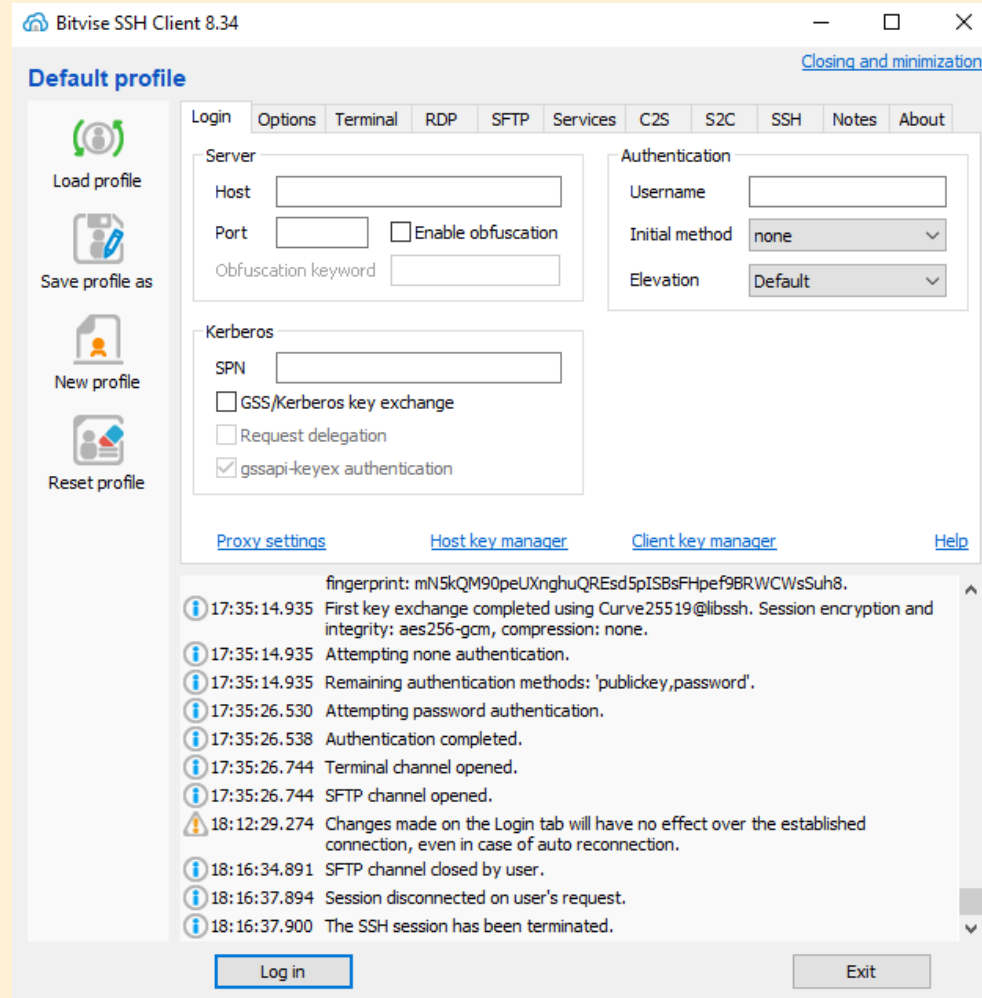


Logging into Bitvise

Tutorial Created by Katie Tapia-Lynch

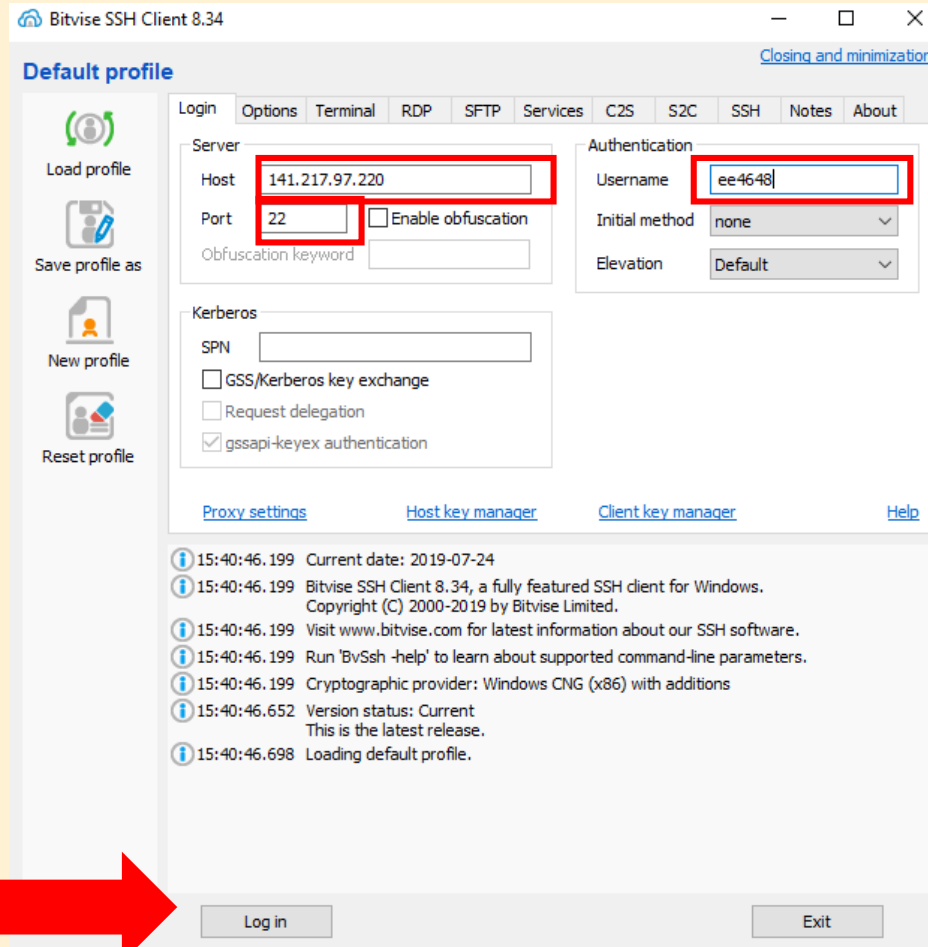


1. Open Bitvise (you should see this window)



2. Enter the following host number, port number, and your username (access ID)

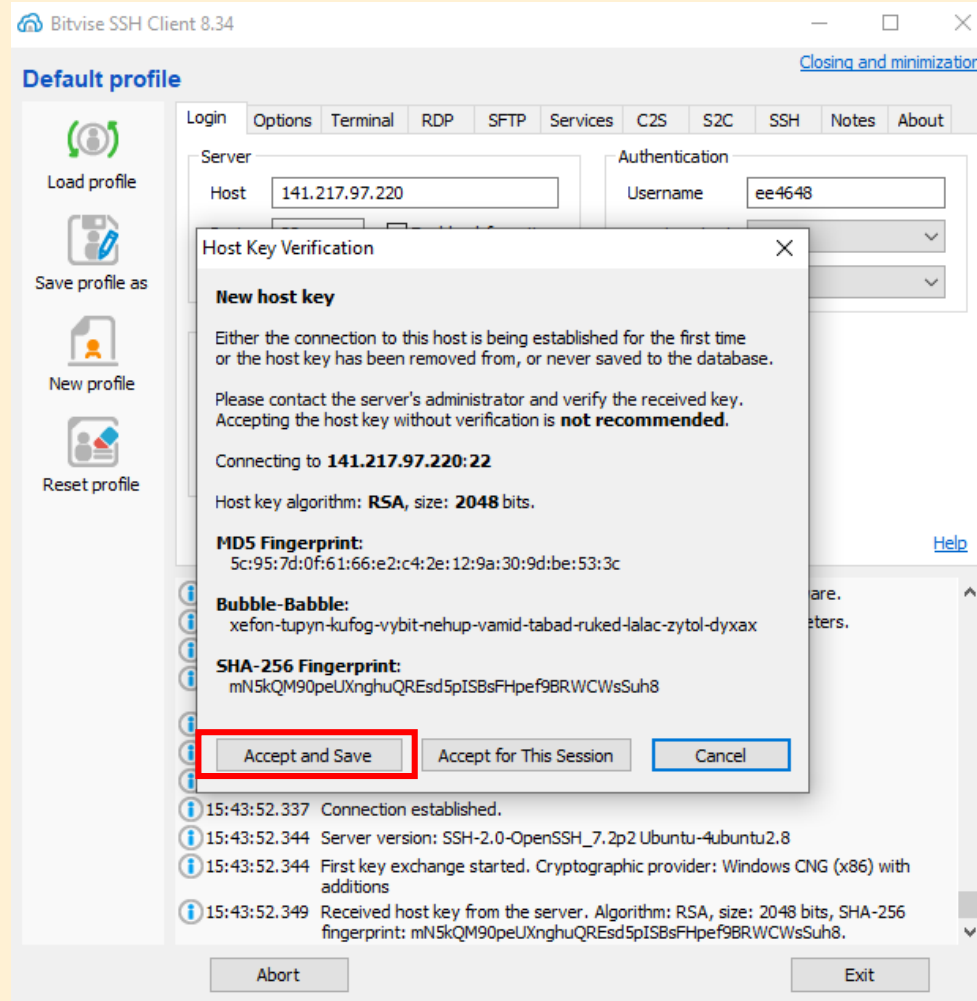
3. Then click on log in



Please note that the host number and port number has to match what is here. The only difference is *your* access ID.

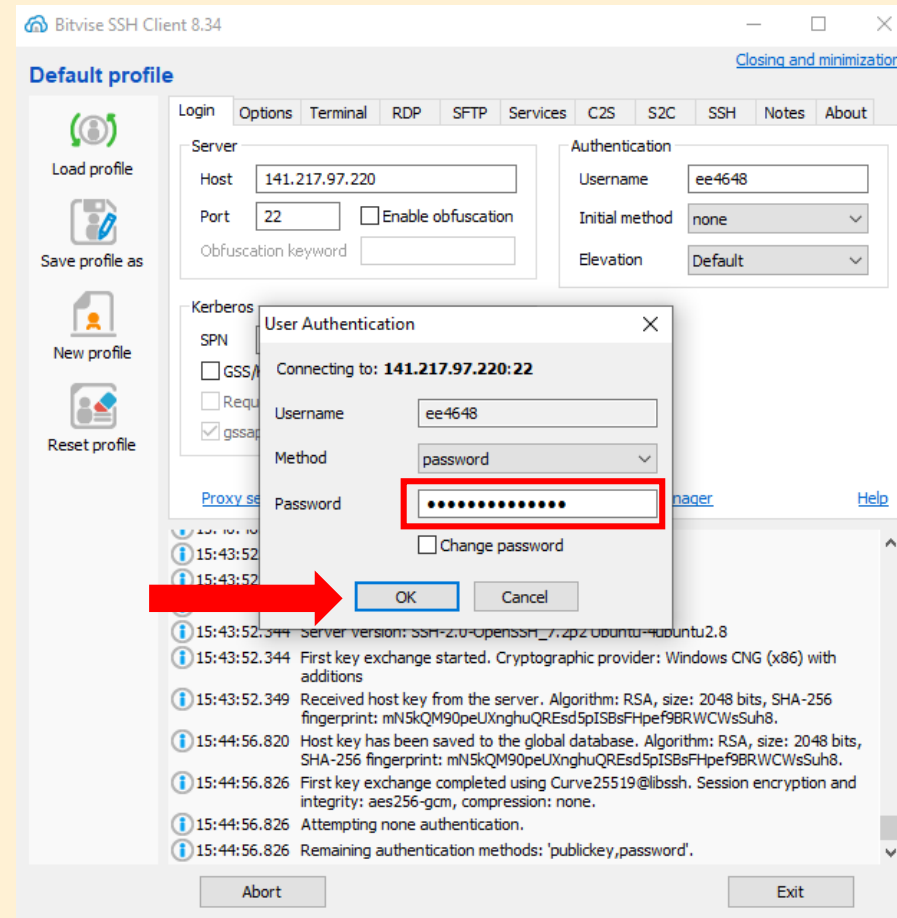


4. Click on “Accept and Save”



5. Next, enter the Apache password that was sent to you in a previous email

6. Then click “OK”



7. Finally, you should see something like this.

